

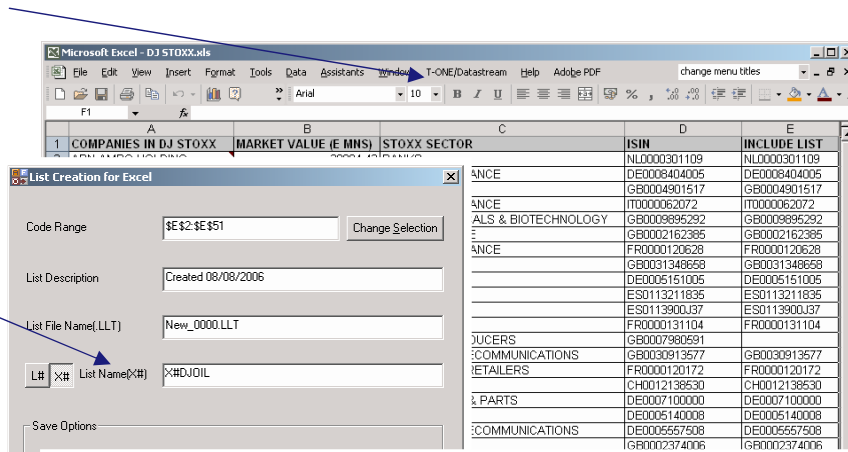
Thomson Datastream User Created Indices Quick Reference

Create your own indices on Thomson Datastream to use in combination with Datastream maintained series in charts and data requests, with the full power of the Datastream expressions language.

Quick steps for setting up a User Created Index

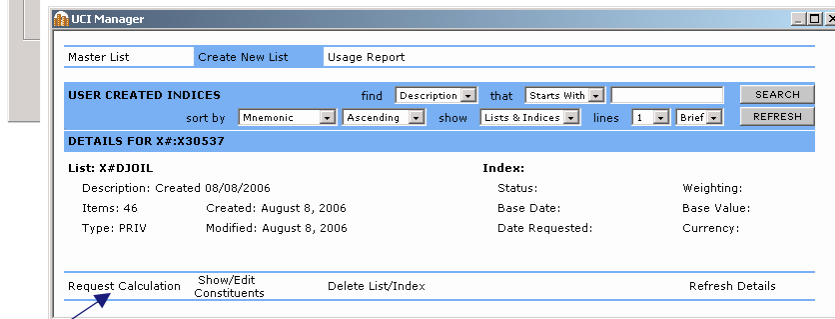
1

From the AFO menu select **Tools > Create List (From Range)** to display the list creation dialog:



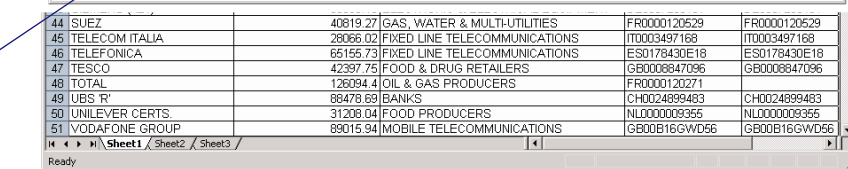
2

Select to create an **X# (UCI) list** and enter a mnemonic starting with **X#** and up to a further 6 characters.



3

Click **Request Calculation** to calculate the index.



Use the **X% mnemonic** to retrieve index values in chart and data requests.

4

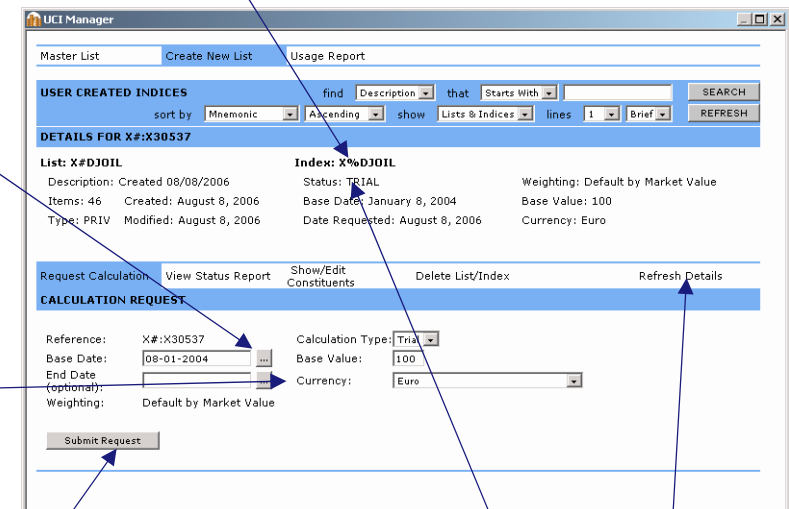
Click **...** to set up the start date for the index.

5

Select the currency to use for the index.

6

Click **Submit Request** to request creation of the index on a trial (one off) basis.



Note: Once you have requested the calculation click **Refresh Details** and check that the status has changed from **TRIAL PENDING** to **TRIAL** to confirm the index has been calculated. For a large index this may take a few minutes.

Note: the facility to create an index directly from a list in Excel was added in Advance 4.0 SP6. In earlier versions: create a local list and edit the list using the **Tools > List Wizard** from the AFO menu. The last dialog enables you to create the X# list.

Creating and managing your indices

The usage report enables you to see how many indices are created on your user ID. Contact the Thomson Helpdesk to increase the number that can be created.

The X% mnemonic is for the index.

The X# mnemonic is for the index constituent list.

Constituents can be added or removed, or the index renamed by clicking Show/Edit Constituents

Set the index to Trial for a one off calculation. Set the index to Auto to calculate it automatically every day.

This interface enables indices to be weighted by market value. Other weighting methods are available through the Tools > Remote Tools option in the Advance interface.

Click the list or index mnemonic to return these to Advance or AFO.

The Status column indicates if the index is calculated every day (AUTO) or was set up as a one off calculation (TRIAL).

Click Master List to display all the indices that have been set up on this ID.

Select from a range of options for finding previously created indices.

Click REFRESH to re-synchronise this master list in the UCI Manager with the UCIs on the Datastream mainframe (this will display indices created using the RemoteTools option in Advance).

Name	List Mnemonic	Index Mnemonic	List Size	Status	Currency	Base Date	Base Value
TOP TEN OIL COMPANIES	X#A00010	X%A00010	27	TRIALE		January 1, 2001	100
TOP TEN UTILITY COMPANIES	X#A00020		27				
SOUTH AMERICA MINERAL CO'S	X#A00060		27				
TOP EUROPEAN CAR COMPONENTS CO'S	X#A00070		27				
CENTRAL EUROPEAN PORTFOLIO 'S	X#A00080		27				
HOLIDAY COMPANIES GERMANY	X#A00090		27				
PRECIOUS METALS LIST	X#A00100		27				
Construction News AIM	X#CN4IM	X%CN4IM	14	AUTO £		August 31, 1999	100

For more information call the Helpdesk on:

UK: 0870 458 1052
 Belgium: +32 (2) 548 98 78
 France: +33 (1) 53 32 39 15
 Germany: +49 (69) 714 05 333

Italy: +39 (02) 8639 11 99
 Netherlands: +31 (10) 424 6635
 Spain: +34 (91) 745 2020

Sweden: +46 (8) 566 196 10
 Switzerland (Geneva): +41 (44) 225 1838
 Switzerland (Zurich): +41 (44) 225 1828