

Thomson Datastream Advance Quick Reference

Annotations:

- Open a project with previously saved requests
- Select data category required
- Select to request charts or reports for all the series in a user created list.
- Select the type of analysis required – ranging from overviews and simple charts to more complex flexible charts – see overleaf
- Display additional information on the selected series
- Information on how to use Datastream
- Select to see a recent request
- Enter the series name and click **Search** (or press <Enter>) to display results in Navigator
- Set the time period using the quick radio buttons or click **Time Period**
- Click **Settings** to display the settings dialog box
- Click **Run Now!** to request the chart
- Directly select the Interactive Charting pages (previously only available through Navigator)
- Switch to project to quickly select a previously selected chart
- In the settings dialog, set the relative index. Other settings include Log and Linear axes

Index Selection Dialog Box:

- Relative Index: Market
- Default Index: Sector
- Periods: Linear Logarithmic
- Buttons: OK, Cancel, Help

Main Chart Data:

ASTRAZENECA 17/5/06

PRICE: HIGH 3055.00 27/4/06, LOW 1861.00 24/1/05, LAST 2900.00 16/5/06

Source: Thomson Datastream

Flexible chart

Select to annotate the chart with text or lines

Select the data category required

Select the multiple series mode and flexible chart

Select a Datastream expression or create a new expression

Buttons to add, remove, re-order series and to clear all the settings

Right click on series to edit in expert mode - for example to add expressions

Select from recently used series

Select the datatype required

Select the settings to use

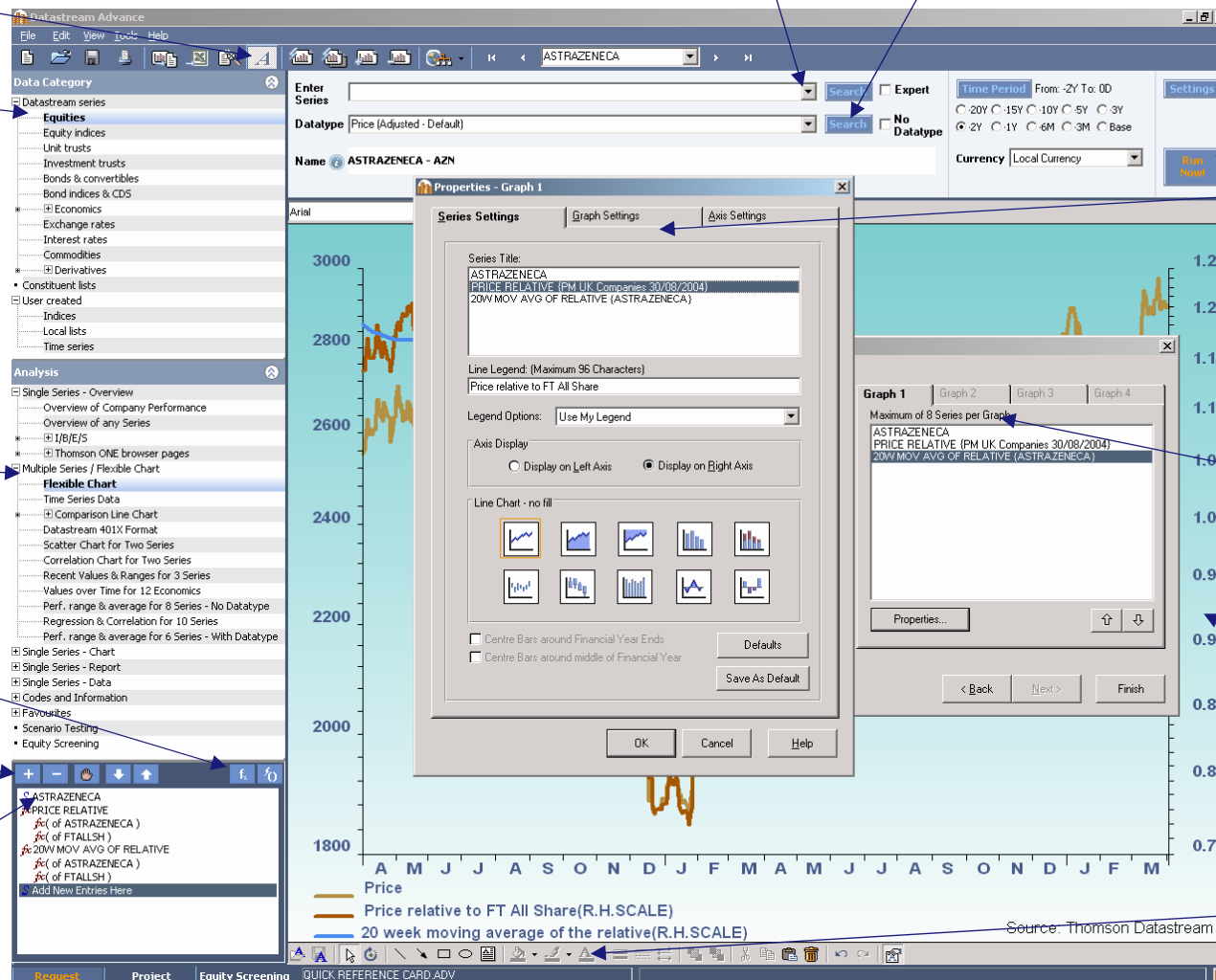
Right click to change to 'Update Current Request'

Select the settings for the series - such as the chart type and legend text, and for the whole chart - such as the rebasing options

Place series as required if several charts selected

Right click on chart background to change the properties of the chart - such as the line and text styles

The annotation bar enables you to add text and lines, or move, edit or delete any part of the chart



For more information call the Helpdesk on:

UK: 0870 458 1052
 Belgium: +32 (2) 548 98 78
 France: +33 (1) 53 32 39 15
 Germany: +49 (69) 714 05 333

Italy: +39 (02) 8639 11 99
 Netherlands: +31 (10) 424 6635
 Spain: +34 (91) 745 2020

Sweden: +46 (8) 566 196 10
 Switzerland (Geneva): +41 (44) 225 1838
 Switzerland (Zurich): +41 (44) 225 1828